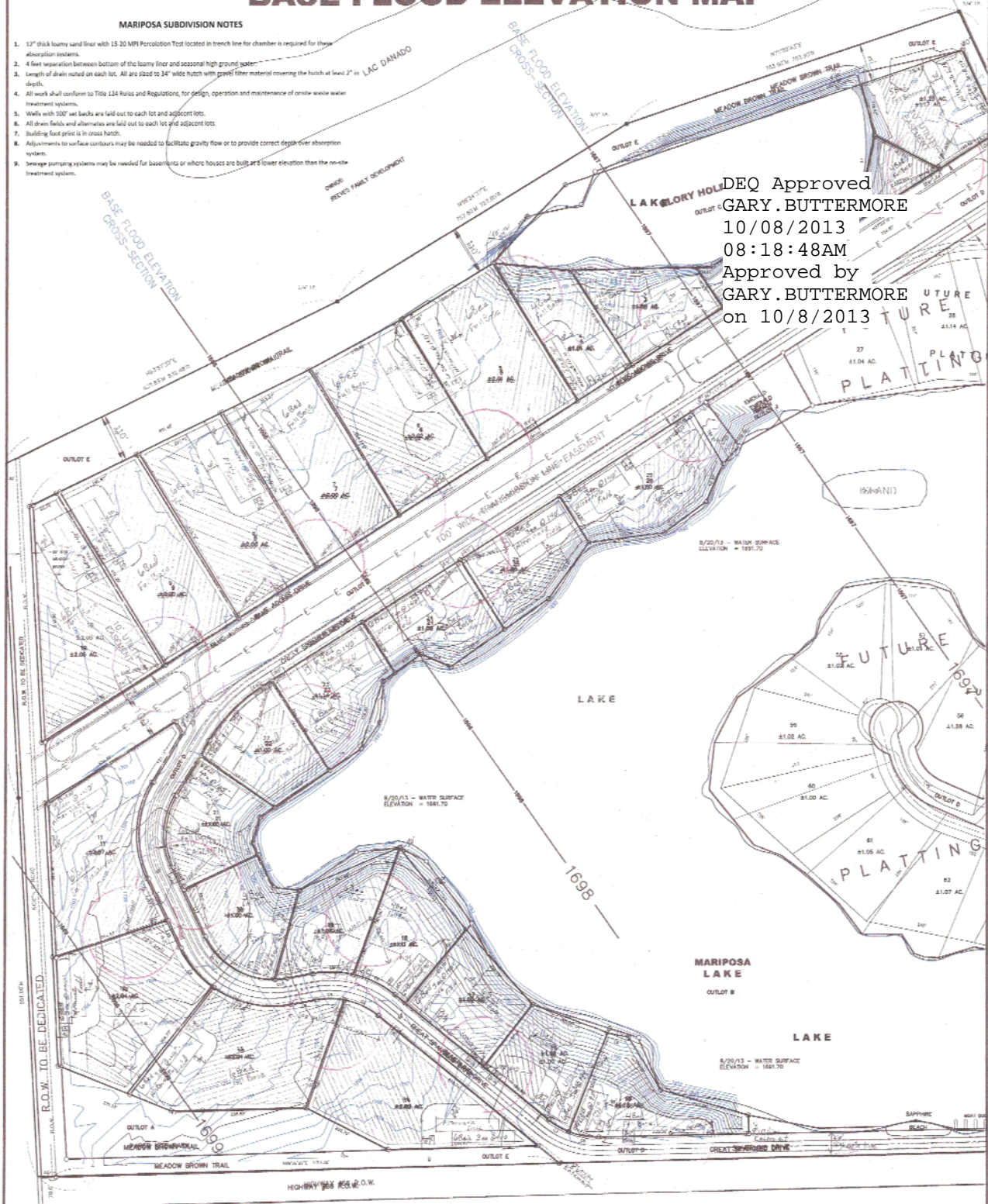


MARIPOSA LAKE DEVELOPMENT CONTOUR MAP AND BASE FLOOD ELEVATION MAP

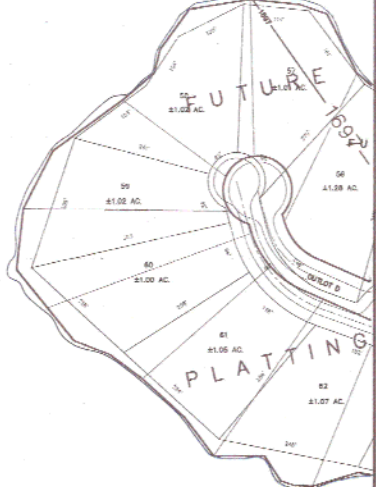
MARIPOSA SUBDIVISION NOTES

1. 12" thick loamy sand liner with 15-20 MPH Percolation Test located in trench line for chamber is required for these absorption systems.
2. 4 feet separation between bottom of the loamy liner and seasonal high ground water.
3. Length of drain noted on each lot. All are sized to 34" wide hutch with gravel filter material covering the hutch at least 2" in depth.
4. All work shall conform to Title 134 Rules and Regulations, for design, operation and maintenance of on-site wastewater treatment systems.
5. Wells with 100' wet backs are laid out to each lot and adjacent lots.
6. All drain fields and alternatives are laid out to each lot and adjacent lots.
7. Building foot print is in cross hatch.
8. Adjustments to surface contours may be needed to facilitate gravity flow or to provide correct design over absorption systems.
9. Sewage pumping systems may be needed for basements or where houses are built at a lower elevation than the on-site treatment systems.



DEQ Approved
GARY.BUTTERMORE
10/08/2013
08:18:48AM
Approved by
GARY.BUTTERMORE
on 10/8/2013

FUTURE PLATTING



BASE FLOOD ELEVATION DETERMINATION:
BASE FLOOD ELEVATION DETERMINED BY KATIE RINCLAND, P.E., CFM
NEBRASKA DEPT. NATURAL RES., P.O. BOX 94676, LINCOLN, NE 68509

HAYS
LAND SURVEYING, LLC
140 North Park Street, P.O. Box 433, Decatur, NE 68701 (402) 747-2108 www.HaysSurveying.com

TITLE
MARIPOSA LAKE DEVELOPMENT
PHASE 1

PROJECT
CONTOUR MAP AND FLOODPLAIN
CROSS SECTION ELEVATION MAP

DATE
8/22/13

SHEET
1 OF 1